



# REMOTE SENSING IN WATER BALANCE

Bojana Horvat

University of Rijeka, Faculty of Civil Engineering

UNIRI

Training for WB teaching staff at UNIRIFCE

24.03.2022.

G  
F

This project has been funded with support from the European Commission. This publication reflects the views only of the author, and the Commission cannot be held responsible for any use which may be made of the information contained therein.

University of Nis



[www.swarm.ni.ac.rs](http://www.swarm.ni.ac.rs)

Strengthening of master curricula in water resources  
management for the Western Balkans HEIs and stakeholders

Project number: 597888-EPP-1-2018-1-RS-EPPKA2-CBHE-JP



## EDUKACIJA

- Primjena daljinskih istraživanja (poslijediplomski studij);
  - ECTS: 6
  - Broj sati (P+S): 15+10

### CILJ:

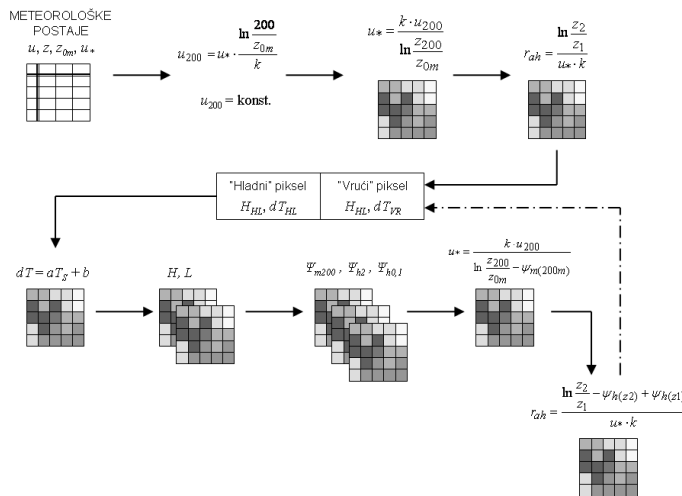
- upoznati se s vrstama daljinskih istraživanja (avionske, satelitske snimke) te steći kompetencije za rješavanje karakterističnih problema iz vodnogospodarske domene primjenom daljinskih istraživanja.

### TEME:

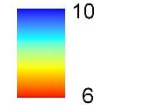
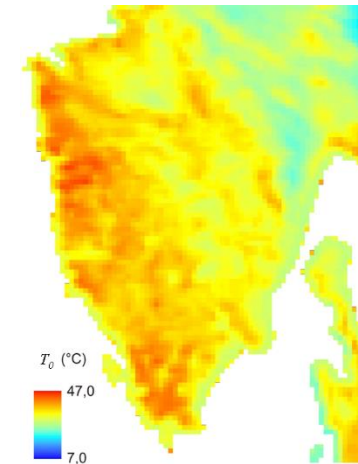
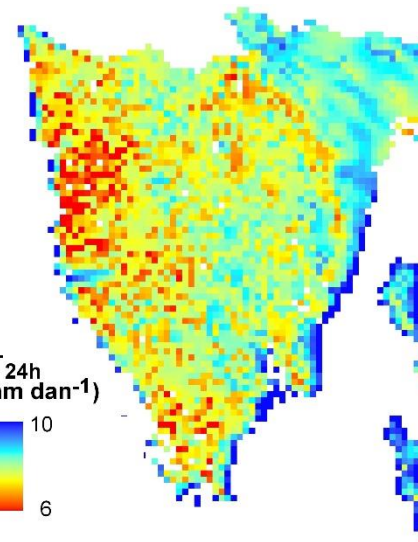
- Teorijske postavke daljinskih istraživanja;
- Senzori i karakteristike snimaka prikupljenih daljinskim istraživanjima;
- Priprema i obrada snimaka prikupljenih daljinskim istraživanjima;
- Geometrijski aspekti podataka prikupljenih daljinskim istraživanjima;
- Vizualna interpretacija snimaka;
- Klasifikacija snimaka;
- Vizualizacija i prezentacija.

# ISTRAŽIVANJE

- Procjena stvarne evapotranspiracije

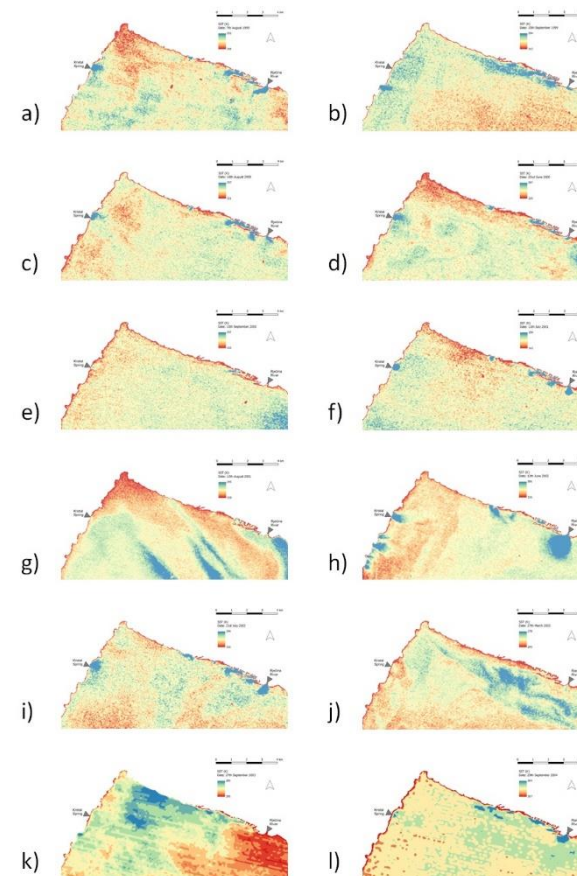
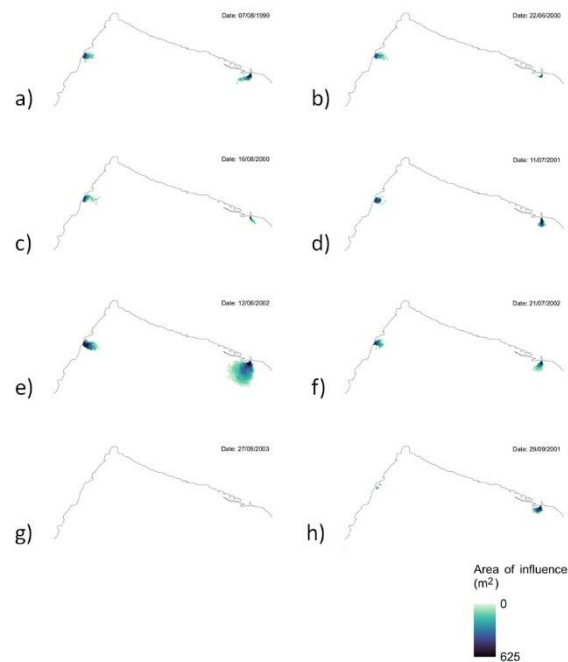
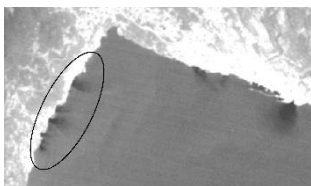


ET<sub>24h</sub>  
(mm dan<sup>-1</sup>)

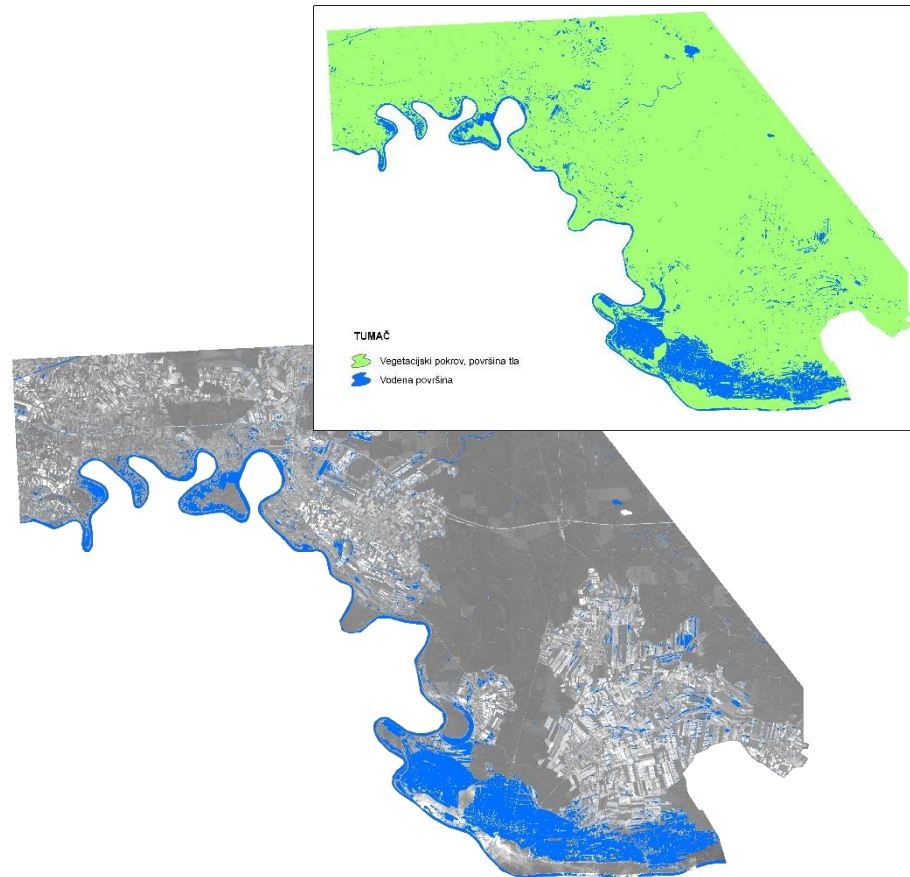
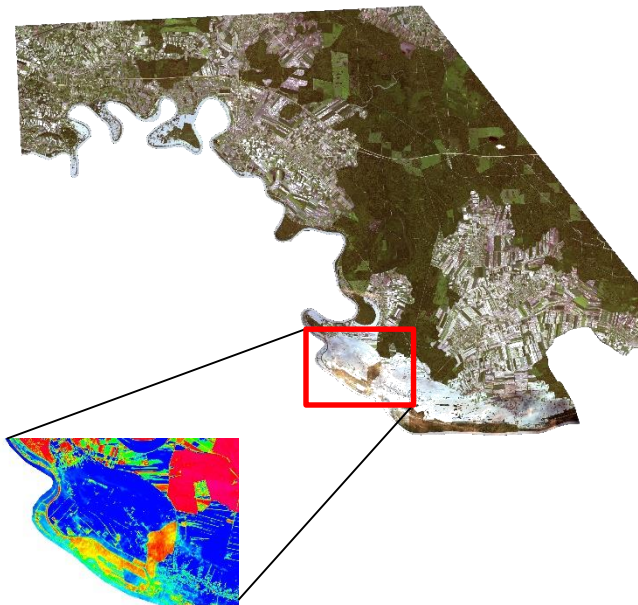
# ISTRAŽIVANJE

- Izdašnost priobalnih izvora



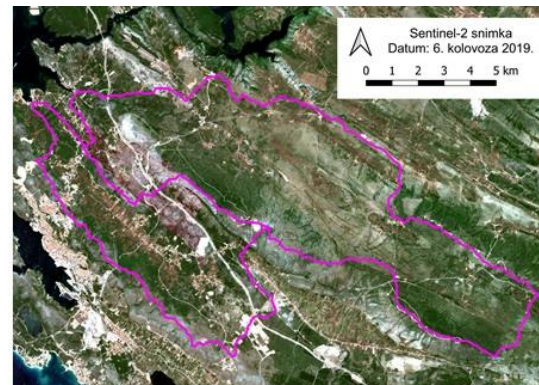
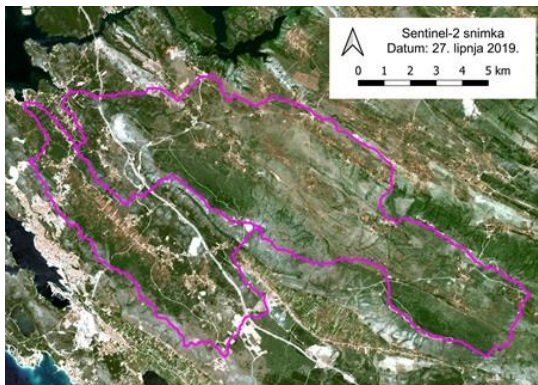
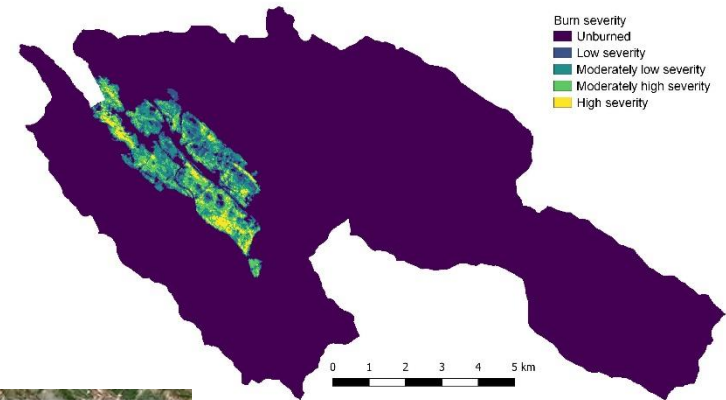
# ISTRAŽIVANJE

- Procjena opsega poplavljene površine



# ISTRAŽIVANJE

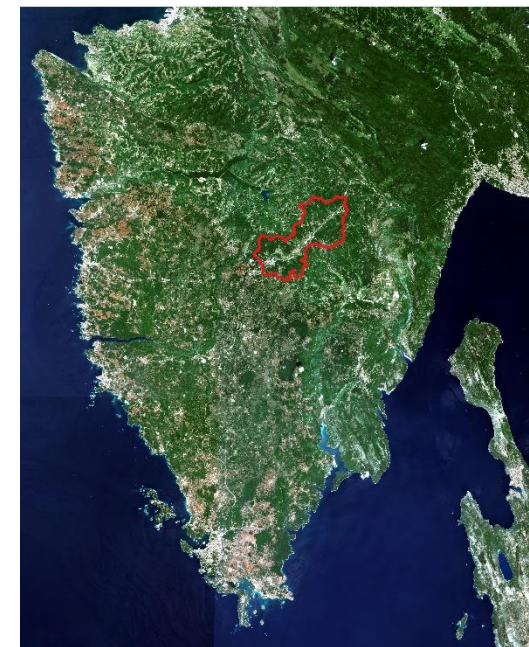
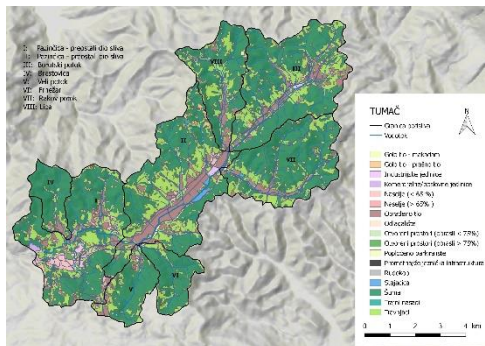
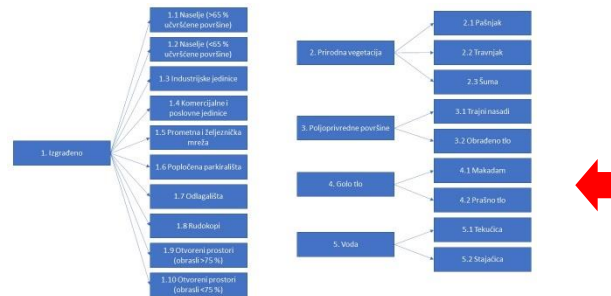
- Utjecaj opožarenosti na bilancu voda malih slivova



 Granica sliva

# ISTRAŽIVANJE

- Pokrov i namjena zemljišta



— Sliv Pazinčice  
Snimka u podlozi:  
Sentinel-2 (ESA); snimljeno 29.7.2020.

